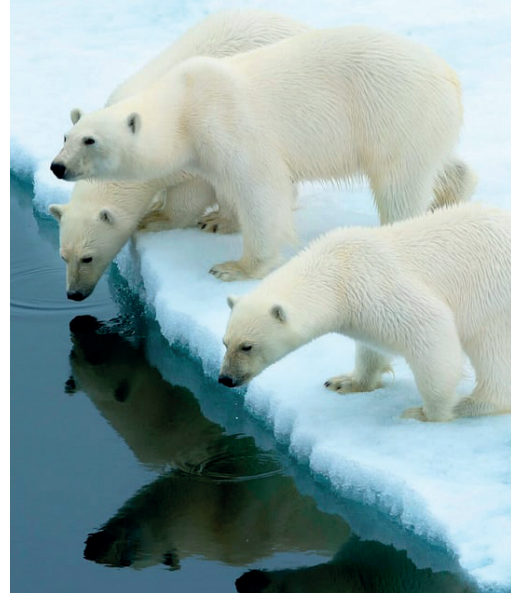




ARCTURUS

THE POLAR ARM OF FAR FRONTIERS TRAVEL

VOYAGES AND EXPEDITIONS





“Welcome to our SHOWCASE brochure.

Inside is a glimpse of just a few of our exciting adventures. Be it on land, in small guided groups or onboard delightful small ships, we can offer you some of the very best experiences in the polar regions.

All the holiday dates and prices are on our website as well as many more trips – so do take a look!

Our **overland expeditions** focus on enjoying nature and scenery by walking, dog-sledging, skiing and camping in the **Arctic, Antarctic, Arctic Norway, Greenland, Iceland, the Faroe Islands**, more remote parts of **Russia** and the **Canadian Arctic**.

At sea, we are agents for operators of breathtaking wildlife expedition voyages to **Arctic Norway, Spitsbergen, Iceland, Greenland, the Faroe Islands, Arctic Russia, the Canadian Arctic, the Falkland Islands, South Georgia, the Antarctic Peninsula** and the **Ross Sea** region.

Within this brochure you'll find a greatly simplified overview of what we offer – there's more detail in the way of itineraries, maps and client comments on our website. **Do call us for detailed dossiers on each trip.**

Remember – come fair weather or foul, we are here to plan the trip you want and we are always ready and delighted to discuss any aspect of your plans, however far into the future you are planning.”

Fiona Brijnath

Fiona Brijnath
Director



ARCTURUS

THE POLAR ARM OF FAR FRONTIERS TRAVEL

Ninestone, South Zeal, Devon EX20 2PZ
tel: **(+44) 01837 840640**
email: fiona@arcturusexpeditions.co.uk
www.arcturusexpeditions.co.uk

Contents

ARCTIC EXPEDITIONS

Arctic Norway – Northern Norway and Spitsbergen	3
Iceland	4
The Faroe Islands	4
Greenland	4
Canadian Arctic	5

ARCTIC VOYAGES

British Isles, Scotland, Iceland and Arctic Norway	6
Arctic Norway and the North Pole	7
Sailing Voyages	7
Greenland	8
Canadian and High Arctic	9

ANTARCTIC VOYAGES

Antarctic Peninsula and Polar Circle	10
Falkland Islands, South Georgia and Antarctic Peninsula	11
Antarctic, Weddell Sea, Ross Sea and Sub-Antarctic Islands	11

SHIPS

Distinguishing Features	12
-------------------------	----

Pricing

Please refer to our website for pricing. Here you will find indicative prices for all our trips. These will generally include **international economy flights** from the UK, **internal transport, transfers** to your embarkation point (where these can be pre-booked) and **accommodation** in twin rooms with meals as specified in our detailed dossiers.

Guide prices for **voyages** are based on twin cabins with private facilities. On request we will quote for single occupancy, triple, quadruple and superior cabins and suites (where available).

Our **expeditions** are nearly all fully-guided, either from the UK or locally.

We include fuel surcharges where applicable, but please note that we are bound to pass on any subsequent surcharges.

Extending Your Trip

As bespoke travel specialists owned by **Far Frontiers Travel**, we can organise pre and post-tour elements to make yours a truly unique trip. So, for example, you could explore **Chile, Argentina, Peru, Bolivia** or **Ecuador/The Galapagos** as the opening or grand finale to your **Antarctic** voyage. Why not take in the glittering sights of **Moscow** and **St. Petersburg** or drive around **Iceland** before setting sail for **Arctic** waters? **We can organise it all.**



Arcturus – Unique Polar Expeditions and the Best Voyages

About Us

Based on Dartmoor, Devon, **Arcturus** has evolved over 40 years from a small niche polar travel company to one of the foremost operators to remote polar regions. **Fiona Brijnath**, your main contact, has established a notable reputation in tailored travel over the past 30 years, and has both the knowledge and experience to navigate you through a marketplace full of often bewildering options. Our itineraries are based on years of local research and experience from past, often scientific, expeditions. You are unlikely to find anyone who gives more attention to personal service and detail than **Fiona**, which is why her clients return time and again.

We're always ready to discuss your travel plans however far ahead they may be



FAR FRONTIERS TRAVEL LTD

Arcturus is owned by **Far Frontiers Travel**, bespoke travel specialist for **Georgia, Central Asia, China and Mongolia, the Far East, Indian Subcontinent** and the **Himalayas, Indochina, Myanmar, Middle East, North Africa, Russia, South America, Japan and Australia**. Call us for our brochure.

email: fiona@farfrontiers.com www.farfrontiers.com

“We recently completed an unforgettable trip to Svalbard, Arctic Norway where we embarked upon a truly spectacular adventure of over 300kms of snowmobiling, plus a full day of dog sledging. We are so thankful for Fiona, in her ability to take a few random comments of what we might like to do and turn those wishes into a spectacular experience that far surpassed anything we could have dreamt of. We will be forever grateful... thank you.”

Andrew McLauchlan & Julie Butler, Svalbard

Arctic Expeditions

Spectacular and other-worldly

Our guided adventures in the **Arctic** include dog sledging, cross-country skiing, camping and kayaking in **Arctic Norway**; tours and self-drive itineraries around **Iceland** and the **Faroe Islands**; wildlife and Inuit encounters in **Greenland** and the **Canadian Arctic**.



See more on our website – including dog sledging to Isfjord Radio, Spitsbergen

Call it mushing, dog sledging or dog sledging – there's no more exhilarating way to explore!

ARCTIC NORWAY, NORTHERN NORWAY AND SPITSBERGEN

Experience early spring in **Northern Norway** by dog-sledge on one of our thrilling small group expeditions in the mountains and high uplands. Led by our Norwegian friends, we can also arrange visits to the **Sami (Lapp)** people in their summer or winter camps by skidoo, **Summer Island**, the **Lofoten Islands** or a fascinating day out in **Tromsø**.

Spitsbergen is the largest island in **Norway's Svalbard Archipelago**. We've exhilarating winter and spring adventures among its pointed mountains, deep fjords and the glorious sparkle of the Arctic. It's idyllic for summer visits too.

NORWAY

Explore Dividalen – Drive Your Own Dogs

6 days | January – March

Stand on the runners whilst the dogs take the strain! They are well-trained, very friendly and need no encouragement to trot all day. Snow and weather conditions permitting, you will make daily trips through a beautiful snowscape. After a day on the trail, relax in the warmth of cosy accommodation or keep an eye out for magical displays of Northern lights.

Leader Local Norwegian leader

Key info Normal group size 4 minimum. Stay in simple accommodation south of **Tromsø**. No previous experience required

Option Ask about hut to hut sledging

WHAT TO EXPECT: The chance of stunning displays of the *Aurora Borealis* in the depths of winter.

TOP TIP: We provide superbly warm sledging suits and thick felt-lined boots so you'll never be cold.

DON'T MISS: **Tromsø** for its atmospheric Polar Museum and Northern Lights Planetarium.

You will find maps and many more trips on our website www.arcturusexpeditions.co.uk



Overnight in Comfort

We've several exciting and different overnight bases for our **Spitsbergen** adventures. Relax in authentic trapper style at **Basecamp Spitsbergen Hotel**, experience the luxury of wilderness hotel and former radio station, **Isfjord Radio** or journey to expedition style **Nordenskiöld Lodge**. More on our website!

SPITSBERGEN

Isfjord and Nordenskiöld Summer Hiking

8 days | July - mid-September

Explore this area of wild **Arctic** on foot and by boat. **Nordenskiöld Lodge** in **Adolfbukta** lies in the heart of polar bear land and in summer the fjord teems with birds, walrus, seals and belugas. Here enjoy glacier hiking and spectacular views with expedition lunch. Travelling to **Isfjord Radio** via open boat safari – watch out for polar bears, reindeer and Arctic fox. Here embark on a whole day hike and a five hour RIB boat safari at 78°N.

Leader Local leader

Key info Optional **Isfjord** hike is 10-16kms. All equipment provided, minimum 4 people



GREENLAND, the world's largest but largely uninhabited island, is a great stand-alone holiday or complement to an **Iceland** trip.

ICELAND

Beguiling and captivating

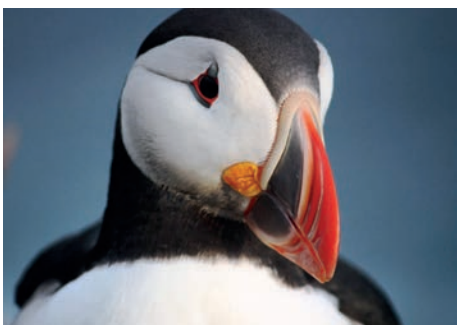
ICELAND, with its long summer days, midnight sun and winter *Aurora Borealis*, is ideal for touring by car – we've splendid self-drive itineraries or can arrange a driver/guide if you prefer.

Self Drive Tour Grand Circle Iceland with West Fjords

15 days | May – September

Waterfalls, glaciers, lava fields, sands of glacial rivers, black beaches, islands and cliffs teeming with bird life. You will be able to discover all this and much more as you drive around the amazing **Snæfellsnes Peninsula**, across the remote landscapes of the **West Fjords** and along the ring road right around the country. Travel at your own pace and spend time at the places that most interest you.

Key info Driving yourself is easy and we give plenty of advice. There are lovely boutique hotels in **Reykjavik** that we can suggest as an upgrade



TO DO: Ride an icelandic pony over black lava fields, walk inside a glacier or 'flightsee' by helicopter for a bird's eye view of a glacier or extinct volcano.

Drive the extraordinary subaquatic 'Jelly fish' roundabout between **Torshavn** and **Eysturøy** in the **Faroës**.

ASK: About sea angling, whale watching, volcanic crater hiking and visits to hidden hot springs. End with a **Reykjavik** foodie tour.



THE FAROE ISLANDS

Enchanting and timeless isles

THE FAROES poke sharply out of the Atlantic Ocean between Norway and Iceland. These 18 islands of narrow straits and small harbour villages are home to less than 50,000 people and more than three million sea birds. The Faroese people have proudly preserved their own culture, traditions and language rooted in the Old Norse.

Faroë Islands Self Drive

8 days | May – September

Driving is the ideal way to explore – with good roads and short distances between points of interest, you can see so much without having to change hotels every night. Visit the bird cliffs at **Vestmanna** and the tiny but picturesque village of **Gjogv**. Ferry hop between little islands in the north and end at **Torshavn**, the **Faroës'** capital, whose excellent restaurants showcase traditional Faroese cuisine.

Key info You can experience four seasons in one day. Average temperatures are 11°C in summer. Travel off season October-April for lower rates



TOP TIP: Faroës summers are short and hotels fill quickly so book early to avoid disappointment.

Ask us about private escorted tours with our lovely local guides.

GREENLAND

Breathtaking fjords and enduring communities

Traditional Dog Sledging in Liverpool Land

10 days | March – May

The Inuit still use the dog sledge to get around in winter, especially at **Greenland's** most isolated village, **Ittoqqortoormiit**, on the east coast. Join us for a traditional dog sledging trip on **Liverpool Land's** spectacular coast. Highlights include flights by Twin-Otter aircraft and helicopter, a few days in **Ittoqqortoormiit** village and four days' camping and travelling with dog sledges.

Leader Local leader

Key info Group size 4 minimum. Stay in guest houses and tents or hunter's huts

South and West Greenland by Traditional Ferry Boat

14 days | June -September

Travel with the locals on the delightful **Sarfaq Ittuk** ferry and see **Greenland's** spectacular glaciers, icebergs, colourful Inuit settlements and Arctic wildlife. This journey along the coast between northerly **Ilulissat** (famed for its icebergs) and **Qaqortoq** in the south calls in at several ports and towns such as **Nuuk**, the smallest capital in the world.

Leader No guide, full briefing on arrival

Key info **Sarfaq Ittuk** usually carries more local passengers than tourists. There's a communal café and great views from the upper decks. Timetables vary so we tailor to fit

OPTIONS

- Ask to include a three day trip to the spectacular **Eqi Glacier**



How about additional hiking options among **South West Greenland's** glaciers and fjords? Contact **Fiona** or visit our website for more suggestions!



BEST TIME TO GO: Winter/early spring for dog sledging and *Aurora Borealis*. Summer for wonderful hiking and cruising in iceberg filled waters.

READ: *Sirius Patrol* by Peter Schmidt Michelson.



CANADIAN ARCTIC

The Inuit people of the **CANADIAN ARCTIC** are an essential part of **Canada's** national and cultural identity. **Nunavut's** vast tundra-clad islands with their remote villages and archaeological sites are accessible only by plane or boat. Iconic narwhal and beluga whale thrive in its waters. **Baffin Island** and **Hudson Bay** offer exceptional chances to get close to polar bear.

Narwhal and Polar Bear Safari

11 days | May - June

Experience the classic spring floe edge and view polar bears, narwhal and icebergs under the midnight sun at the northern reaches of **Baffin Island**. Fly in and stay at a tented safari camp on an **Arctic** beach with views of **Bylot Island**, close to **Lancaster Sound**. Guided by Inuit you'll aim to spot narwhal, polar bears, beluga and bowhead whales.

Leader Local guide

Key info Group size 8-16. One of the best places to combine narwhal and polar bear encounters



Bike the High Arctic

11 days | June - July

Journey deep into the **Arctic**. Your purpose built bike is your expedition cockpit and **Arctic Watch Lodge** is your basecamp. This human powered adventure will explore the frozen landscapes of the **Northwest Passage** floe edge as polar bears hunt seals and summer begins to grasp the polar landscapes. Bike the tundra in search of muskoxen as the **Arctic** flora begins to bloom and life takes hold on the summer landscapes of **Somerset Island**.

Leader Local guide

Key info Group size 6 maximum. Daily excursions by electric bike are fully guided. Nights are in an off-the-grid basecamp in en-suite cabins with locally sourced Canadian cuisine. Normal daytime temperatures range from 6° - 14°C. Warm days can reach 21°C



High Arctic Muskoxen and Polar Bear Photography

11 days | August

Early Autumn in the high **Arctic** - a unique time where polar bears await the return of winter ice and muskox battle for breeding rights. As the final throws of 24-hour sunlight hit the tundra, we set out to experience the wildlife of **Arctic Watch** and **Somerset Island** in a small photography-focused adventure. Polar bears, muskox, narwhal, **Arctic** foxes, snowy owls and more.

Key info Group size 9 maximum. Expertly led adventure. You'll see muskox (up to 35 animals) in full rut. Includes helicopter assisted hiking

OPTIONS

- Ask about our annual July **Beluga Whale Photography** tour when 2,000 of these iconic marine mammals congregate in **Cunningham Inlet**

BEST TIME TO GO: There's plenty to see and do any time between May and November.

READ: *Dead Reckoning: The untold story of the Northwest Passage* by Ken McGoogan.



Where the wild meets the refined

800km north of the **Arctic Circle**, **Arctic Watch**, Nunavet, is a three hour flight from **Yellowknife NWT**. Find out more about this great lodge and its gourmet cuisine on our website!

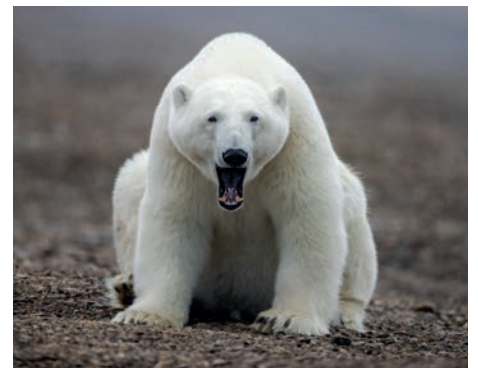
Arctic Watch Lodge Discovery Experience

11 days | June - August

Home to polar bears, muskoxen, **Arctic** foxes and a world-class beluga whale nursery, **Arctic Watch** is an unparalleled destination for the adventurous. The Weber family have skied, kayaked, hiked and explored right across **Canada's** far north. Join them at this most northerly fly-in lodge on earth. Fully-guided excursions range from wildlife photography to 'fat biking' the frozen **Arctic Ocean** and sea kayaking alongside beluga whales.

Leader Local guide

Key info Add on an optional overflight of the **Northwest Passage** landing on **Beechey Island**. Observe narwhal and bowhead whales en route



See website for maps and more detail, including our Hudson Bay Fly-In Safari and Polar Bears and Glaciers of Baffin Island itineraries.

A wilderness of drama

The snowy peaks, glaciers and fjords of **Spitsbergen** are the focus of many of our voyages in **Arctic Norway**.

In **East Greenland** we explore **Scoresby Sund**, the spectacular south east coast and the glorious shores of **West Greenland**.

We also sail to the **British Isles, Scotland, The Faroes, Iceland, the Canadian and High Arctic and Arctic/Far East Russia**, as well as smashing through the sea ice towards the **North Pole**.

Many voyages have early booking offers – contact us to check when they expire.

All trips include flights and overnight accommodation en route to the ship.

These voyages are just a small sample of what we can offer you. Please contact us or check the website for more options, dates and prices.

BRITISH ISLES, SCOTLAND, ICELAND AND ARCTIC NORWAY

Traditions, folklore, whales and seabirds

The British Isles

13 days | May

Embark in **Portsmouth** and sail west to **Tresco** in the **Scilly Isles**, onto **Ireland's Dunmore East** and the **Saltee Islands** and **Llandudno** on the north coast of **Wales**. You'll recross the **Irish Sea** to **Northern Ireland** for the world renowned **Giants Causeway**. The inner and outer **Hebrides** including remote and storm ravaged **St Kilda** are also on the agenda as well as the **Orkneys, Fair Isle** and **Bass Rock** awash with northern gannets.

OPTIONS

- **Wild Islands and Lands of Legends** voyage in and out of **Edinburgh** to **Orkneys, Fair Isle, Shetlands** and the **Faroes**
- 12 day **Wild Scotland** voyage in May sails **Edinburgh to Aberdeen** via the **Hebrides, the Shetland Islands** and **Orkneys**
- Join an unusual spring voyage which routes **Portsmouth to Dublin** via **Stornaway**



Iceland Circumnavigation

11 days | May

Explore the 'Land of Ice and Fire' where snow-capped peaks rise above glaciers and active volcanoes rumble. Walk along a black sand beach strewn with glittering bergy bits and discover geysers, fumaroles and bubbling mud pools, or explore spectacular fjords and impressive waterfalls, in one of the most geologically active places on earth. Keep watch for tail flukes as we whale watch in **Húsavík**, explore **Látrabjarg** bird cliffs, the largest in Europe and visit **Vatnajökull National Park**.

OPTIONS

- Some voyages just cover the **Westfjords** and north coast in a fascinating **Semi Circumnavigation**



Fair Isle, Jan Mayen to Spitsbergen, Birding

10 days | May - June

On this **Aberdeen to Longyearbyen** expedition you'll search for birds and other **Arctic** wildlife and explore the stark volcanic **Norwegian island of Jan Mayen**, 300 nautical miles northeast of **Iceland**, crowned by the snow-capped summit of 2300m **Mt. Beerenberg**. Here we aim to visit the weather station and hike to the remains of a 17th-century **Dutch** whaling station. We'll scour the **East Greenland** ice edge north of **Spitsbergen** in search for whales before coming into port.

OPTIONS

- Sail **Aberdeen to Longyearbyen Across the Arctic Circle** in the height of summer via the **Norwegian Coast, Lofotens** and **Bear Island**



Northern Lights Explorer via Greenland

19 days | September

On this unusual voyage we stay close to the coastlines of the **Arctic Circle**, skirting around the **Norwegian** and **Greenland** seas, and exploring remote islands and villages, hoping to catch the magical northern lights as night falls. Just south of the **Arctic Circle**, explore the UNESCO World Heritage Site of **Vega Island**. We'll attempt to land on **Jan Mayen**, home to **Mount Beerenberg**, the northernmost active volcano in the world and discover dazzling icebergs of the world's largest fjord system at **Greenland's Scoresbysund**, ending in **Iceland's** remote **Westfjords** for remote hikes among splendid scenery.

ARCTIC NORWAY AND THE NORTH POLE

In the footsteps of fabled explorers



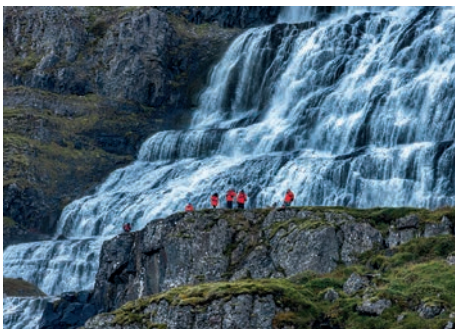
North/ Around Spitsbergen

9-11 days | May – August

These popular voyages are ideal for the first time visitor to the **Arctic** with numerous zodiac shore landings amid walrus, seals, whales and sea birds, and of course, the ever powerful and magnificent polar bear. Itineraries vary according to the ice conditions but generally early season voyages cover the west side of **Spitsbergen** whilst July/August trips aim for a full circumnavigation.

OPTIONS

- Try **Basecamp** voyages in June / July with free hiking, kayaking and photography workshops
- On selected voyages help by cleaning the shores
- June voyages look for bowhead whales and are designated polar bear and pack ice specials
- Look out for August voyages – **Svalbard Circumnavigations** extending as far as **Kvitøya**



Arctic Complete – Svalbard, Greenland, Iceland

24 days | July – August

Embark on a voyage from **Iceland** to **Svalbard** and see it all. Scan for whales, the majestic polar bear and enigmatic walrus on pack ice. **East Greenland** dazzles with its iridescent icebergs and deep exploration in **Scoresbysund** – the world's largest fjord system. Witness spectacularly colourful patterns in the sandstone rocks, visit remarkable **Palaeolithic** sites and have the chance to encounter muskox and **Arctic** hare. Venture close to 80° north looking for polar bears on the pack ice.



East Spitsbergen and Summer Solstice

9 days | June

Experience the high **Arctic** summer solstice with an unusual expedition to **East Spitsbergen**. Our goal is to take you to amazing glaciers, fascinating historical sites, bountiful seabird colonies and sprawling fjord systems. Here is a good chance of spotting whales, seals, and possibly even polar bears. In addition, bear witness to the **summer solstice** in **Longyearbyen**.

OPTIONS

- For a longer voyage combine with a preceding **North Spitsbergen** itinerary and take advantage of longer hike options – you'll walk at least 15 km/6 hours in semi-rough terrain that includes shorelines, tundra, low hills, and river crossings

Extended North and East Spitsbergen and Bear Island

17 days | June – July

Why not combine **East Spitsbergen** (great for polar bears and pack ice) with a **North Spitsbergen Basecamp** voyage (multiple free activities) to make one epic trip. Basecamp voyages focus on land and near-shore activities with minimal disturbance to local populations while looking for wildlife opportunities whenever possible. Hikers embark on vigorous walks, photographers capture the dramatic surroundings, and kayakers explore waterways where the ship cannot sail. At the same time, we welcome you to help us in cleaning the shores of **Spitsbergen**.

SAILING VOYAGES

Spitsbergen

These voyages on a small, historic sailing vessel with friendly crew offer an entirely different Arctic experience. You'll travel at a slower pace, but enjoy the same options for zodiac trips ashore to hike and explore. Get involved in the hoisting of sails and daily shipboard life.

Ask for more detail on the voyages below:

Sail North/Around Spitsbergen

12-16 days | May – August.

Voyages out of **Longyearbyen**. Travel in June for the summer solstice. Late July voyages circumnavigate.

Keen to sail in Greenland and Iceland? Ask about October voyages.

Alpine Peaks of Spitsbergen Hike, Ski and Sail

9 days | May

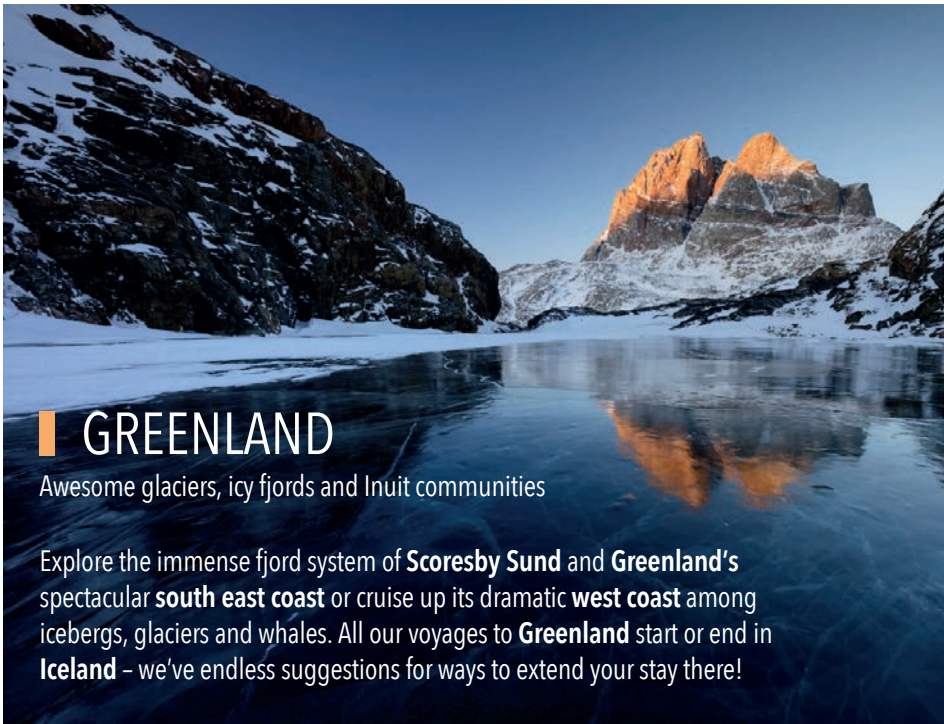
Calling all experienced ski mountaineers who have mastered ski techniques both for ascent and descent in challenging snow-covered alpine terrain. Your typical day will involve ski climbs on mountaintops averaging heights of 700–850 meters and downhill skiing from those points. In combination with sailing an historic ship – and on-shore hiking, it will make for a memorable adventure.



Board a luxury hybrid icebreaker to sail from **Spitsbergen** to **The Geographic North Pole** July/August in 16 days. Ask about other options for **North Pole** voyages.



Email Fiona - fiona@arcturusexpeditions.co.uk | 7



GREENLAND

Awesome glaciers, icy fjords and Inuit communities

Explore the immense fjord system of **Scoresby Sund** and **Greenland's** spectacular **south east coast** or cruise up its dramatic **west coast** among icebergs, glaciers and whales. All our voyages to **Greenland** start or end in **Iceland** – we've endless suggestions for ways to extend your stay there!

Spitsbergen and North East Greenland

16 days | August – September

These adventurous voyages provide a rare opportunity to see the remote north-east coast of **Greenland**. Crossing from **Spitsbergen**, we keep watch for fin, humpback and minke whales and approach **East Greenland**, landing at **Myggebugten**. We hope to encounter narwhal and should see musk oxen from the ship. Moving south to **Scoresby Sund** we land near a glacier and encounter huge icebergs before disembarking finally in **Akureyri** in north **Iceland** for the journey home. On clear dark nights we might be able to see the *Aurora Borealis*.

OPTIONS

- Try a 24 day extended **Around Spitsbergen & Northeast Greenland – Aurora Borealis** voyage also in August
- Our **Three Arctic Islands – Iceland, Greenland and Spitsbergen** voyage operates between **Reykjavik** and **Helsinki** in 15 days
- The popular two week **Jewels of the Arctic** voyages in July and August discover **Svalbard's** northwest coast and the east coast of **Greenland** before concluding in **Iceland**
- **Greenland** is a great place to sample our 'longer hikes' voyages



Greenland Odyssey

17 days | July

Experience the enormity of **Greenland** on this comprehensive voyage from **Sermilik Fjord** and **Tasiilaq** on **Greenland's** east coast, south to **Skjoldungen Island**, **Hvalsey** and **Tasermiut Fjord**. Discover ancient rocks at **Skaergaard Peninsula** dating back some 55 million years. Sail **Prince Christian Sound**, flanked by imposing mountains. Hike across the **Arctic** tundra in search of **Arctic** fox, reindeer and muskox. Zodiac-cruise along spectacular sounds where ringed, harp and hooded seals laze on the sea ice and humpback and minke whales feed in the nutrient-rich waters. Weaving through fjords and channels, enter **West Greenland**, sailing from **Paamiut** to the UNESCO World Heritage-listed **Ilulissat Icefjord**.

OPTIONS

- Ask for the ultimate 26 day adventure **Greenland in Depth** in August or **Wild Landscapes of West Greenland** – two weeks' indepth focus on **Ilulissat, Disko island** and northern environs

East Greenland

11 days | September

This memorable voyage starts and finishes in **Reykjavik, Iceland**. We cross the **Denmark Strait** to explore the wilderness of **East Greenland's** stunning **Scoresby Sund** fjord complex. We'll discover historic sites and a contemporary Inuit village and encounter massive icebergs.

On our return journey we explore **Iceland's Westfjords**. Each night brings another excellent chance to experience the mesmerising **Northern Lights**.

OPTIONS

- We've a great **Scoresby Sund** voyage, out of **Akureyri** which crosses the **Arctic Circle** into the home waters of multiple species of whale. Spot huge icebergs as you journey into the world's deepest fjord system in September

Gems of West Greenland

12 days | July – August

Immerse yourself in the dramatic coast of **West Greenland**, exploring deep into fjords and stunning islands. You'll visit **Sisimiut**, **Manitsoq** and **Uummannaq**, venture into **Qilakitsoq** (the site of the Greenland Mummies) and explore **Store Glacier** and its immense discharge zone. Find massive glaciers and dip into **Eqip Sermia** or **Torsukatak Fjords**, located in the northeast corner of **Disko Bay**. At the peak of summer, enjoy sunny days, clear vistas, and longer opportunities to see wildlife.

OPTIONS

- Helicopter flightseeing, tundra to table culinary, mountain biking, kayaking



WHAT TO WEAR: Dress in layers with a wind and waterproof outer layer. Fleece is great underneath. It can still be cold sailing in the middle of summer so a hat, scarf and gloves are sensible if you feel the cold.

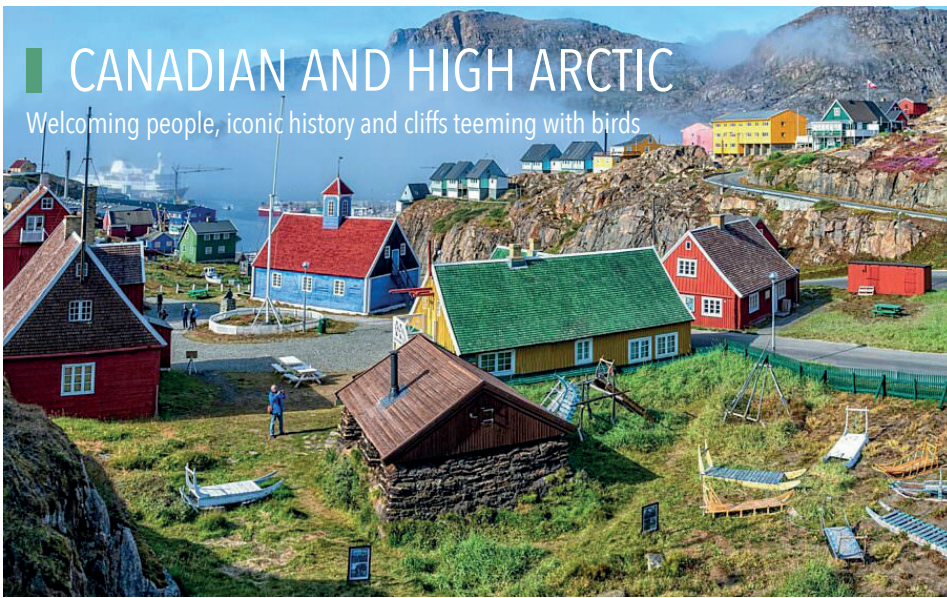
BRING WITH YOU: Insect repellent and antihistamine for mosquito protection in summer.

Check the website for our prices which include flights and overnight accommodation en route to the ship. Prices are based on twin cabins with private facilities.

For updates on Russian Arctic voyages see the website.

CANADIAN AND HIGH ARCTIC

Welcoming people, iconic history and cliffs teeming with birds



Canada's Remote Arctic – Northwest Passage to Ellesmere and Axel Heiberg Islands

13 days | August

This rare itinerary is intent on reaching Canada's most northerly islands, **Axel Heiberg Island** and rarely visited **Ellesmere Island**, transiting **Hells Gate**. We hope to fly up to explore the **Devon Ice Cap**, one of **Canada's** largest. History buffs may pay their respects to the ill-fated 1845–46 **Franklin** expedition gravesites on **Beechey Island**. You may see sea mammals, polar bears, muskox, and even the elusive **Arctic** wolf.



High Arctic Explorer

17 days | August

Journey in comfort from **Resolute Bay** to **Kangerlussuaq, Greenland** at the height of Arctic summer! Explore the **Tallurutiup Imanga** marine protected area, visit the **Franklin** graves on **Beechey Island** and enjoy an Inuit welcome in **Mittimatalik** (Pond Inlet). Across **Baffin Bay** lies the sublime **Greenland** coast. **Ilulissat** offers great hiking and the **Icefjord** – home to the fastest-moving glacier in the world.

Greenland and Wild Labrador

19 days | September – October

Follow the 2,200 nautical mile route of **Leif Erikson** via coastal **Labrador** from **Sondre Stromfjord, Greenland** to historic **St. John's**, capital of **Newfoundland** and **Labrador**. Highlights include Greenland's capital **Nuuk**, **Canada's** pristine **Torgat Mountains National Park**, searching for polar and black bear along **Northern Labrador's** coastline and **L'Anse aux Meadows**, a UNESCO World Heritage Site.

The Northwest Passage

19 days | August - September

The **Northwest Passage** represents the pinnacle of **Arctic** exploration. On this trip, like the explorers before us, we'll experience the quaint villages, dramatic fjords, and calving glaciers of **Greenland**. Then, crossing **Davis Strait**, we'll visit **Nunavut**, pay respects at the **Franklin Expedition** graves at **Beechey Island** and spot Peary caribou, polar bear, walrus, and musk oxen on **Devon Island**. The recent findings of **Franklin's** ships, **HMS Erebus** and **HMS Terror** remind us that we sail into history, legend, and myth that continue today. Our epic journey's end is at **Kugluktuk, Canada**.

The first voyage sails from **Kangerlussuaq, Greenland** to **Kugluktuk** via **Pond Inlet, Baffin** and the second trip operates in reverse, but heads further north to **Grisefjord** and **Smith Sound**.

Into the Northwest Passage: August – September
Out of the Northwest Passage: September

OPTIONS

- Go for a back to back 18 day **Northwest Passage** voyage in July/August using **Calgary** and **Toronto** as gateways for charter flights to the ship. You'll hug **Baffin's East Coast** and have landings at **Devon, Beechey** and **Prince Leopold Islands**
- For the trip of a lifetime try a 31 day **Complete Northwest Passage** from **Kangerlussuaq** to **Nome** in August/September
- Follow history with a **Northwest Passage in the Footsteps of Franklin** voyage routing from **Greenland** along the length of **Baffin Island** to **Resolute** in August.
- Arctic Express Canada, the Heart of the Northwest Passage** for those interested in the region but short of time. Spend five days covering **Resolute, Beechey Island, Port Leopold** and **NW Baffin** in September and making good use of your ship's onboard helicopters



See the website for more, including our **Newfoundland Circumnavigation** and **Heart of the Arctic** itineraries!

Must read: *Finding Franklin* by Russell Potter



Antarctic Voyages

The **Antarctic Peninsula** is a spectacular chain of mountains and glaciers supporting the richest wildlife in **Antarctica**.

Most of our voyages depart from **Ushuaia, South America** and cross the **Drake Passage**, visiting the **South Shetland Islands** and the **Antarctic Peninsula**. A few voyages embark in the **South Shetland Islands** to avoid the **Drake Passage** crossing.

Some take in **South Georgia** and the **Falkland Islands**. More adventurous voyages head for the **Ross Sea** to visit emperor penguin colonies and **Scott's** and **Shackleton's** huts.



Kingdom of penguins

Many voyages have early booking offers – contact us to check when they expire.

Prices are based on twin cabins with private facilities.

These voyages are just a small sample of what we can offer you. Please contact us or check the website for more options, dates and prices.



ANTARCTIC PENINSULA AND POLAR CIRCLE

Classic Antarctic Peninsula with South Shetlands

14-16 days | November – March

These voyages offer the best introduction to the **White Continent**. Beginning in **Ushuaia**, ships cross the **Drake Passage** directly to the **Peninsula** to explore its wildlife and scenery. Some also include the **South Shetland Islands** and its abandoned whaling station on **Deception Island**. Return through the **Gerlache Strait**, home to leopard seals and blue-eyed shags. Zodiac cruises and numerous landings enable viewing of all species of penguins, seals, whales and other wildlife as well as historic sites and operational research bases.

OPTIONS

- Inquisitive travellers should join our **Discovery and Learning** voyages with interactive in-field and on-board workshops, November – February
- **All Access** voyages with free adventure options including kayaking and camping usually operate in November and December with ten nights on board
- Some Christmas departures include two nights ashore in **Ushuaia** pre-voyage
- Ask about **X-Bow** ships which help to smooth out the **Drake Passage**
- Ask about **Antarctic Peninsula Basecamp** voyages where adventure activities are free

Antarctic Explorer Featuring the Chilean Fjords

16-17 days | February – March

Starting in **Punta Arenas, Chile**, combine **Chilean Fjords** with channels flanked by majestic mountains, thrilling **Cape Horn** and the unimaginable beauty of **Antarctica**. One voyage overflies the **Drake**, the other ends in **Ushuaia**.

OPTIONS

- Short of time or worried about rough seas? Fly the **Drake** in both directions on **Antarctic Peninsula Express** 8 day voyages November to March

Antarctica Beyond the Polar Circle Wilkins Ice Shelf

20 days | March

This expedition voyage explores the rarely visited **Bellingshausen Sea**, **Marguerite Bay**, and **Alexander Island**. We focus on many places discovered by **Adrien de Gerlache** on his **Belgian Antarctic Expedition** (1897 – 1899) aboard the **Belgica**. We'll travel beyond the **Antarctic Circle**, where we aim to spend the rest of the trip. We'll see ice shelves and land on islands where few people have set foot.

OPTIONS

- Try a March **Polar Circle Deep South Discovery** voyage
- Late March sees **Polar Circle** voyages focussing on whales. Similar voyages include **Elephant Island** and the **Weddell Sea**
- Celebrate Christmas going **Across the Antarctic Circle** December/January



DON'T DELAY: Because some of the vessels are comparatively small we recommend booking early.

MUST DO: Camp overnight on the **Peninsula** to experience **Antarctic** weather close up. It might seem tough at the time but you won't regret it! It's popular so you'll need to pre-book.



ANTARCTIC, WEDDELL SEA, ROSS SEA AND SUB-ANTARCTIC

In the footsteps of fabled explorers



Weddell Sea in Search of Emperors with Helicopters

15 days | November

A tremendous sense of excitement spreads through the ship as we enter the **Weddell Sea** on this voyage to the **Antarctic Peninsula's** wild side. Our goal is the famed emperor penguin rookery at **Snow Hill Island** with around 4,000 breeding pairs. The area is known for unpredictable conditions – as we are unlikely to reach through the ice as far as the emperor penguin rookery south of **Snow Hill Island** we aim to situate ourselves in or between the **Antarctic Sound** and **James Ross Island**, close to the ice-edge where we can observe the penguins on their way to the open water. We will make scenic flights and landings in places otherwise inaccessible this early in the season. However, if ice-conditions favour us, we will reschedule to offer ship-to-shore helicopter transfers, landing around 45 minutes' walking distance from the rookery.

Activities On-board helicopters
Key info Successful landings since 2017

OPTIONS

- Join a luxury hybrid icebreaker cutting through thick ice to reach **Snow Hill Island** itself – voyages in November. Ask for details



Remote Weddell Sea Explorer

31 days | February – March

This adventurous expedition explores one of the least-visited areas on Earth, **Antarctica's** amazing **Weddell Sea** and includes **South Georgia, South Sandwich Islands, Neuschwabenland, Vahsel Bay, Larsen Ice Shelf, Paulet** and **Devil Islands** and **Elephant Island**. After visiting sites that **Sir Ernest Shackleton** charted in **South Georgia**, enjoy the **Weddell's** exotic wildlife and colossal tabular icebergs.



In the Wake of Scott and Shackleton

33 days | January – February

The **Ross Sea** is only accessible for two months a year when the ice thaws. This remote region drew many of the most famous explorers and adventurers including **Scott, Shackleton** and **Amundsen** and we aim to visit five historic huts to learn more of the explorers' achievements.

The region is the breeding ground for millions of adelic and emperor penguins. We aim for landings in the **Sub-Antarctic Islands: Auckland, Campbell** and **Macquarie**.



Sub-Antarctic Islands – Birding Down Under

22 days | December

Explore the 'Albatross Latitudes' and the most remote **Sub-Antarctic Islands** including **The Snares, Bounty, Antipodes, Auckland, Campbell, Macquarie** and **Chatham** islands on this comprehensive wildlife and history expedition out of **New Zealand**.

OPTIONS

- You might also consider a shorter **Sub-Antarctic Islands: Forgotten Islands of the South Pacific** voyage to **Campbell Island, Auckland Islands** and **The Snares** also in December

All our prices include flights! See our website for more detailed voyage information!

FALKLAND ISLANDS, SOUTH GEORGIA AND ANTARCTIC PENINSULA

Wildlife and polar history in a pristine panorama

South Georgia Explorer

19 days | November

Few places compare with **South Georgia** and the **Falkland Islands** in terms of exotic wildlife and jaw-dropping scenery. On this exploratory voyage enjoy both, touring the world's largest black-browed albatross colony and some of the biggest breeding spots for king penguins and elephant seals on earth. Six days are spent in and around **South Georgia**.

OPTIONS

- Try a 20 night **South Atlantic Semi-Circumnavigation** from **Ushuaia** to **Capetown** via **South Georgia** and **Tristan Da Cunha**
- An epic 44 day **Atlantic Odyssey** voyage repositions the vessel from the **South Atlantic** to the **Arctic**. This finest pelagic bird-cruise includes **Antarctic Peninsula, South Georgia, Tristan Da Cunha, Ascension Island** and **St Helena**

Falklands, South Georgia, Antarctic Peninsula

24-27 days | October – February

These longer voyages visit **Port Stanley, Falklands** then head for **South Georgia** spotting numerous seabirds as we cross the **Convergence**. Three days are spent in **South Georgia** visiting historic sites including **Shackleton's** grave and encountering fur and elephant seals, albatross and petrels. Your final three days will include **Orcadas Station** in the **South Orkneys**, the **Antarctic Peninsula** and **South Shetland Islands**.

OPTIONS

- First voyages of the season embark in **Puerto Madryn**
- Try **Antarctica Complete** which combines a polar circle crossing with the **Falklands, South Georgia and Antarctic Peninsula**
- Longer 27 day voyages usually in February include **Elephant Island** and polar circle

DISTINGUISHING FEATURES Our guide prices on the website are based on twin cabins usually with private facilities, but many vessels offer a variety of single or shared cabins and suites which we can quote for on request. More information, deck layouts and photographs at www.arcturusexpeditions.co.uk/ships.

Arcturus works with almost all of the smaller ships currently operating in the Arctic and Antarctic. We navigate fjords, passages and ice floes and use zodiac rigid inflatable boats guided by the ship's expedition staff for shore excursions. All fitness levels are catered for and there is a comprehensive programme of lectures.



ICEBREAKER

50 Years of Victory

Nuclear powered polar-class icebreaker and the largest fitted for passenger travel to the North Pole.

Passengers 124 in en-suite cabins of five categories, all with ocean views

Itineraries North Pole



X BOW SHIP WITH SINGLE CABINS

Douglas Mawson

Maiden voyage 2025. Purpose-built vessel which redefines small ship expeditions. Serious wildlife itineraries with comforts. Heated outdoor swimming pool, two Jacuzzis, gym / sauna, and Citizen Science Centre. Two restaurants and multiple observation areas. Suites, some with balconies, include a range of single cabins.

Passengers 154

Itineraries Arctic, Antarctic



REVOLUTIONARY X BOW SHIP

Greg Mortimer

Launched 2019. Fast, comfortable ship with balcony suites. Virtual anchoring to protect sea floor, hydraulic viewing platforms and zodiac docks for easy loading.

Passengers 132

Itineraries British Isles, Arctic, Antarctic, Canadian Arctic



PIONEERING EXPEDITION VESSEL

Heritage Adventurer

Spacious ship 1A super ice-class rating. 14 zodiacs, observation lounge with 270-degree views. Pool, gym, hot tub, sauna and steam room.

Passengers 140

Itineraries Ross Sea, New Zealand, Subantarctic Islands, Japan



POLAR CLASS 6 SHIP

Hondius

Commenced operation June 2019. World's first-registered polar class 6 cruise ship. An observation lounge covers one entire deck. All cabins have private facilities.

Passengers 170

Itineraries British Isles, Arctic, Antarctic



LUXURY ICEBREAKER

Le Commandant Charcot

Maiden voyage in 2021. World's first luxury hybrid electric/LNG PC2 Class icebreaker. Epitome of responsible and sustainable, low impact sailing. All balcony suites, fine dining, pool, sauna, snow room, hot tub.

Passengers 200

Itineraries North Pole, Arctic, Antarctic, Weddell Sea



SISTER SHIP TO VEGA

SH Minerva

Elegant 5-star expedition ship. Modern, Scandi design, stylish interiors with the latest in cruising technology. PC5 ice-strengthened hull, and extra-large stabilizers for smooth sailing. Jacuzzi, gym, sauna, pool.

Passengers 158

Itineraries Arctic, Antarctic



OCEAN LINER STYLE

Ocean Adventurer

1A ice class expedition vessel with gym, library and private dining. Multi-million dollar renovation in June 2017.

Passengers 128

Itineraries Scottish Islands, Arctic, Antarctic



COMPETITIVE PRICING

Ocean Endeavour

1B ice-class vessel with 20 zodiacs and a top deck observation room. Big on local community visits.

Passengers 198

Itineraries Canadian Arctic, Iceland, Greenland, Scotland



X BOW SHIP

Ocean Explorer

Modern, elegant and purpose-built for polar exploration. A comfortable and smooth sailing experience thanks to the inverted bow. Two-story, light-filled library, spacious Scandi design cabins almost all with verandas. Gym, sauna and two outdoor jacuzzis.

Passengers 138

Itineraries Arctic, Antarctic



SOLID AND WORKMANLIKE

Ortelius

Highest ice-class notation to navigate solid sea ice and loose pack ice. 11 zodiacs and helicopter.

Passengers 108

Itineraries Arctic, Antarctic, Ross Sea, Weddell Sea



GREAT OBSERVATION LOUNGE

Plancius

Comfortable, ice-strengthened and well suited to exploratory voyages. Double gangway for speedy zodiac loading.

Passengers 108

Itineraries Arctic, Antarctic



COMFORTABLE SAILING SHIP

Rembrandt Van Rijn

Reinforced bow and good open deck viewing areas.

Passengers 34 in mainly en-suite cabins

Itineraries Spitsbergen, Norway



INNOVATIVE ITINERARIES

Sea Spirit

Ice-class 1D vessel and very comfortable. Cosy decor. All cabins have private facilities, views and TV, some with balconies.

Passengers 114

Itineraries Arctic, British Isles, Antarctic



SUPER ICE CLASS 1-A RATING

Seaventure

Refurbished Spring 2021 with highest ice class for passenger vessels. Sauna, bespoke citizen science lab and heated saltwater pool. Kayaking, snowshoeing, and camping options.

Passengers 139

Itineraries Antarctica



XBOW SHIP

Sylvia Earle

Launched October 2021 with a unique glass atrium lounge inside the bow, balcony suites and two jacuzzis, four dedicated sea level zodiac launch platforms and array of adventure options.

Passengers 132

Itineraries Arctic, Antarctic, British Isles, Canadian Arctic



TWO TWIN-ENGINE HELICOPTERS

Ultramarine

Launched late 2020, 1A, PC6 Ice class vessel. 20 quick-launching zodiacs, spacious suites, wellness amenities and numerous outdoor viewing spaces.

Passengers 199

Itineraries Arctic, Greenland, Antarctic, Canadian Arctic



ELEGANT SCANDI-DESIGN

SH Vega

Maiden voyage July 2022. 5-star boutique ship with PC5 ice-strengthened hull and extra-large stabilisers. Sister ship: SH Minerva

Passengers 152

Itineraries Arctic, British Isles, Antarctic



REFINED AND ROOMY SHIP

World Explorer

Ice-class 1B, all-balcony, all-suites expedition ship. Six tiers of deluxe accommodation, glass-domed observation lounge and numerous wellness and adventure options.

Passengers 172

Itineraries Arctic, Antarctic, Canadian Arctic

Arcturus, Ninestone, South Zeal, Devon EX20 2PZ

Arcturus: Registered in England No 5798604
Registered office: 7C Cranmere Road, Exeter Road Industrial Estate, Okehampton, Devon, EX20 1UE



Travel with confidence

All the flights and flight-inclusive holidays in this brochure are financially protected by the **ATOL scheme**. When you pay you will be supplied with an ATOL Certificate. Please ask for it and check to ensure that everything you booked (flights, hotels and other services) is listed on it. **Please see the booking conditions on our website for further information or for more information about financial protection and the ATOL Certificate go to: www.atol.org.uk/ATOLCertificate.**

Clients wishing to book their own international flights are financially protected by the **TOPP (Total Payment Protection) scheme**. Full details are given on the **Arcturus** website under 'Your financial protection'.